

The petainerKeg USD format can be filled on many suitably modified steel Keg-Fillers.
Please contact the filling machine supplier for advice, format parts and program modifications.

When using the petainerKeg USD format, please note the following:

General

Modify the machine program in accordance with the instructions below:

1. All steel Keg washing and sterilising functions need to be inhibited, including the “head seal check” and the spear adaptor moving, except on the filling head.
2. Keg must be filled volumetrically to the required capacity to provide head space.

Racker Conversion

1. Check that the filling head spear adaptor (piston top) dimensions comply with the Petainer closure drawing. Failure to do so may damage the closure and prevent its proper operation!
2. Mount a plate/disc below the Keg clamp to apply pressure evenly across the USD packaging.
3. Maximum allowed clamp pressure is:
 - a. 30 l USD: 1600 N (360 lbf)
 - b. 20 l USD: 1300 N (292 lbf)

Filling

1. We recommend disinfecting the fitting surface before filling (e.g. with 70% alcohol).
2. Purge/rinse the Keg with CO₂ (or other appropriate inert gas) to remove air from the Keg prior to filling.
3. **By request** we deliver the USD with >99% N₂ inside.
4. Keg counter-pressure and filling (maximum pressure 3 bar / 43.5 psi) can then proceed as normal.

Intermediate head rinsing

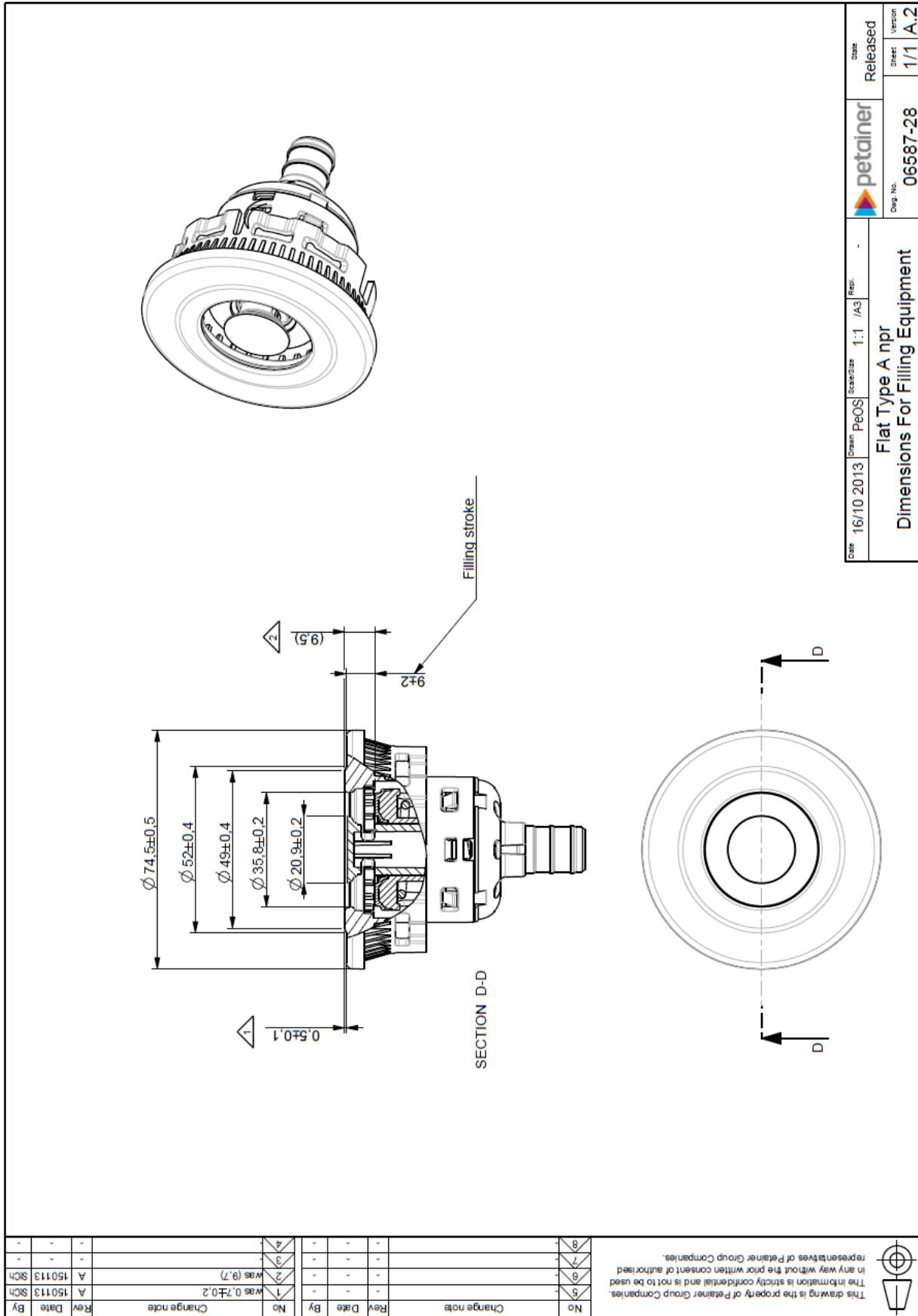
If the racker design allows, it is desirable to flush/disinfect the filling head and each keg valve from outside before and after filling.

1. e.g. with hot water (1 second with 85°C / 185 F).
2. Water pressure before filling maximum 0.5 bar / 7.25 psi.
3. Water pressure after filling should not exceed the pressure in the Keg.

Safety

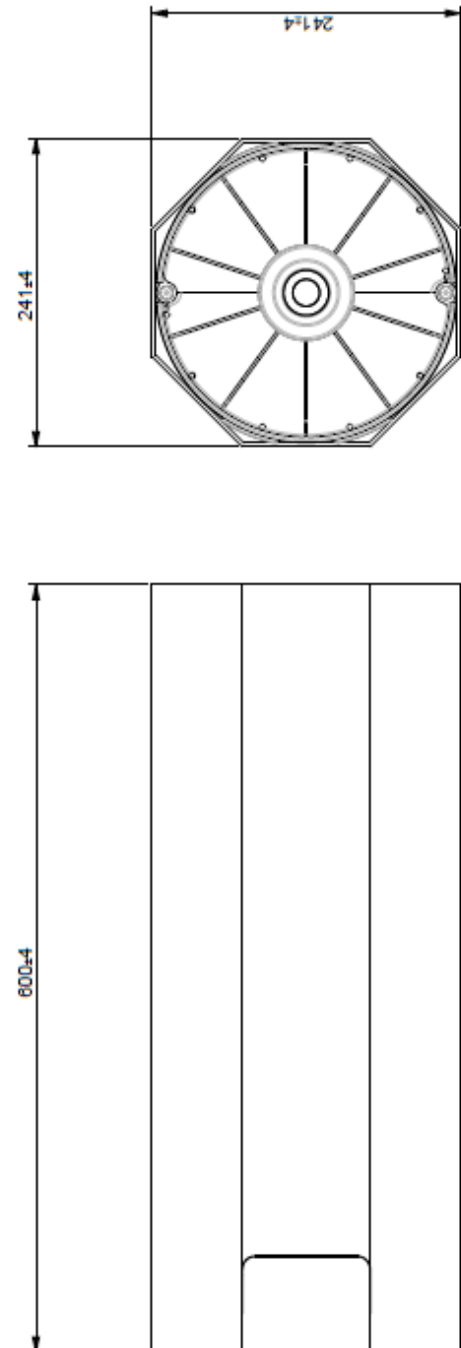
1. All machinery must be guarded in accordance with local regulations.
2. Eye and ear protection, together with work-wear should be used.
3. PET Kegs can burst when damaged by sharp objects.
4. Under filled Kegs or other rejects should be de-pressurised prior to disposal, using the Pressure Release Tool (PRT) supplied.

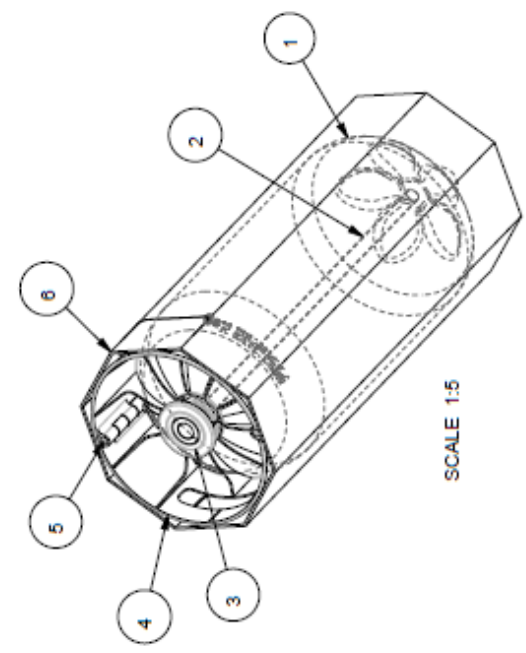




Date	16/10 2013	Drawn	PeOS	Scale/Size	1:1 /A3	Rev.	-
Released	petainer						
Sheet	06687-28						
Version	1/1 A.2						
Flat Type A npr Dimensions For Filling Equipment							

A npr = A-type without automatic pressure relief function





SCALE 1:5


6	1	20 l USD Octabin	06803-02	PP	353.0
5	2	20 l USD Flange	06651-03		
4	2	20 l USD Chime Half	06651-02		
3	1	Flat Type A npr	06687-25		
2	1	495 mm A Spear	06559-01		
1	1	20 l Classic	06508-03		

Pos	Qty	Name	Model No.	Material	Weight [kg]	Note
Date	11/11 2013	Drawn	PeO	Checked	3:10	/A3
20 l USD A npr Assembly Drawing						
Dep. No.	06601-19					Released
Drawn	1/1					Version
						-1

No	Change note	Rev	Date	By

No	Change note	Rev	Date	By

This drawing is the property of Petainer Group Companies. In any way without the prior written consent of authorized representatives of Petainer Group Companies.



A npr = A-type without automatic pressure relief function

SCALE 1:5

6	1	30 l USD Octabin	06804-03	PP	430.0
5	2	30 l USD Hinge	06652-05		
4	2	30 l USD Chime Half	06652-04		
3	1	Flat Type A npr	06587-25		
2	1	483 mm A Spear	06559-02		
1	1	30 l Classic	06530-01		

Date	14/11 2013	Drawn	RFR	Scale	3:10 /A3	Rep.	-	Material	Weight [g]	Note
petainer 30 l USD A npr Assembly Drawing										
								Dwg. No. 06602-18	Sheet / Version 1/1 -1	Released

No	Change note	Rev	Date	By
5		-	-	-
6		-	-	-
7		-	-	-
8		-	-	-

No	Change note	Rev	Date	By
1		-	-	-
2		-	-	-
3		-	-	-
4		-	-	-

This drawing is the property of Petainer Group Companies. In any way without the prior written consent of authorised representatives of Petainer Group Companies.