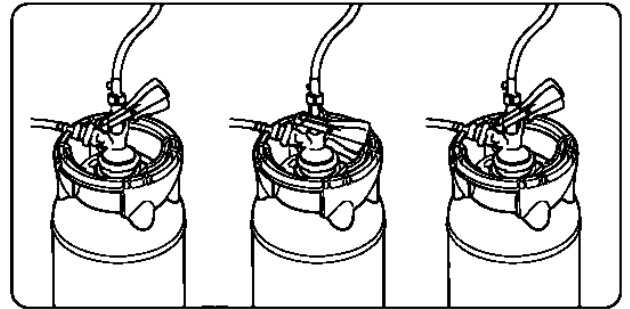


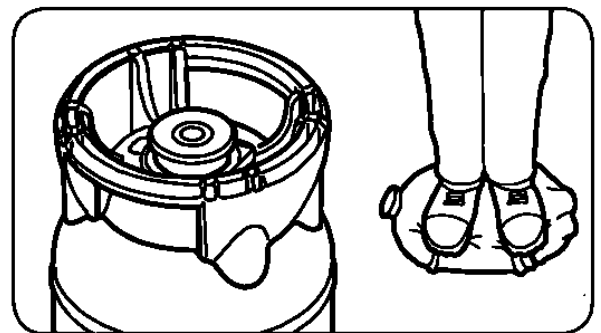
Hybrid A pr - Instruction for use

1. Break and remove the snap cap.
2. Slide the dispense head onto the fitting on top of the keg.
(Take care that the **dispense head is fully engaged/slide on to the fitting**, to avoid fitting damage while pressing the handle down.)
3. Push down the dispense head handle.
The keg is now ready to dispense.



Hybrid A pr - Instruction for disposal

1. When the keg is empty, pull the dispense head handle upward.
2. Cover the valve with a towel or cloth. Gently slide the dispense head off the keg. The gas in the keg will be evacuated through the automatic pressure relief valve.
3. When **fully depressurised**, disassemble the Hybrid according to the disassembling pictograms and send for recycling in accordance with local recycling rules and regulations.



Hybrid disassembling

(Please use also the Hybrid disassembling video on our website):



If cleaning of the dispense line is required, or there is a need to uncouple the Hybrid for any reason before the keg is empty:

1. Put the keg in an upright position.
2. Put a towel or similar around the fitting and dispense head.
3. Pull the dispense head handle upward.
4. Gently slide the dispense head off the fitting to release the pressure in the keg through the automatic pressure relief valve.
5. Keep the keg upright and cover the "open" fitting.
6. Reconnect as quickly as possible.

To reconnect the keg:

1. Slide the dispense head onto the fitting.
2. Hold the keg fitting with one hand.
3. Push down the dispense head handle with the other hand.
The keg is now ready to dispense again.