

The petainerKeg USD format can be filled on many suitably modified steel Keg-Fillers. Please contact the filling machine supplier for advice, format parts and program modifications.

When using the petainerKeg USD format, please note the following:

General

Modify the machine program in accordance with the instructions below:

1. All steel Keg washing and sterilising functions need to be inhibited.
2. Keg must be filled volumetrically to the required capacity to provide head space.

Racker Conversion

1. Check that the filling head spear adaptor (piston top) dimensions comply with the Petainer closure drawing. Failure to do so may damage the closure and prevent its proper operation!
2. Mount a plate/disc below the Keg clamp to apply pressure evenly across the USD packaging.
3. Maximum allowed clamp pressure is:
30 l USD: 1600 N / 360 lbf (45 psi for 3 in cylinder)
20 l USD: 1300 N / 292 lbf (40 psi for 3 in cylinder)

Filling

1. The petainerKeg will arrive pre-purged with a Nitrogen (N₂) with a purity above 99% and pressurized between 0.7 to 0.8 bar (10.0 to 11.5 psi).
2. If a higher initial counter is required, the keg can be pressurized up to a maximum of 3 bar (43.5 psi).
3. We recommend disinfecting the fitting surface before filling (e.g. with 70% alcohol).
4. Keg filling can then proceed as normal.
5. Adjust the back pressure control settings so that pressure in the keg after the fill has been completed remains above 0.7 bar / 10 psi.

This helps to improve the strength of the keg during transportation etc.

Intermediate head rinsing

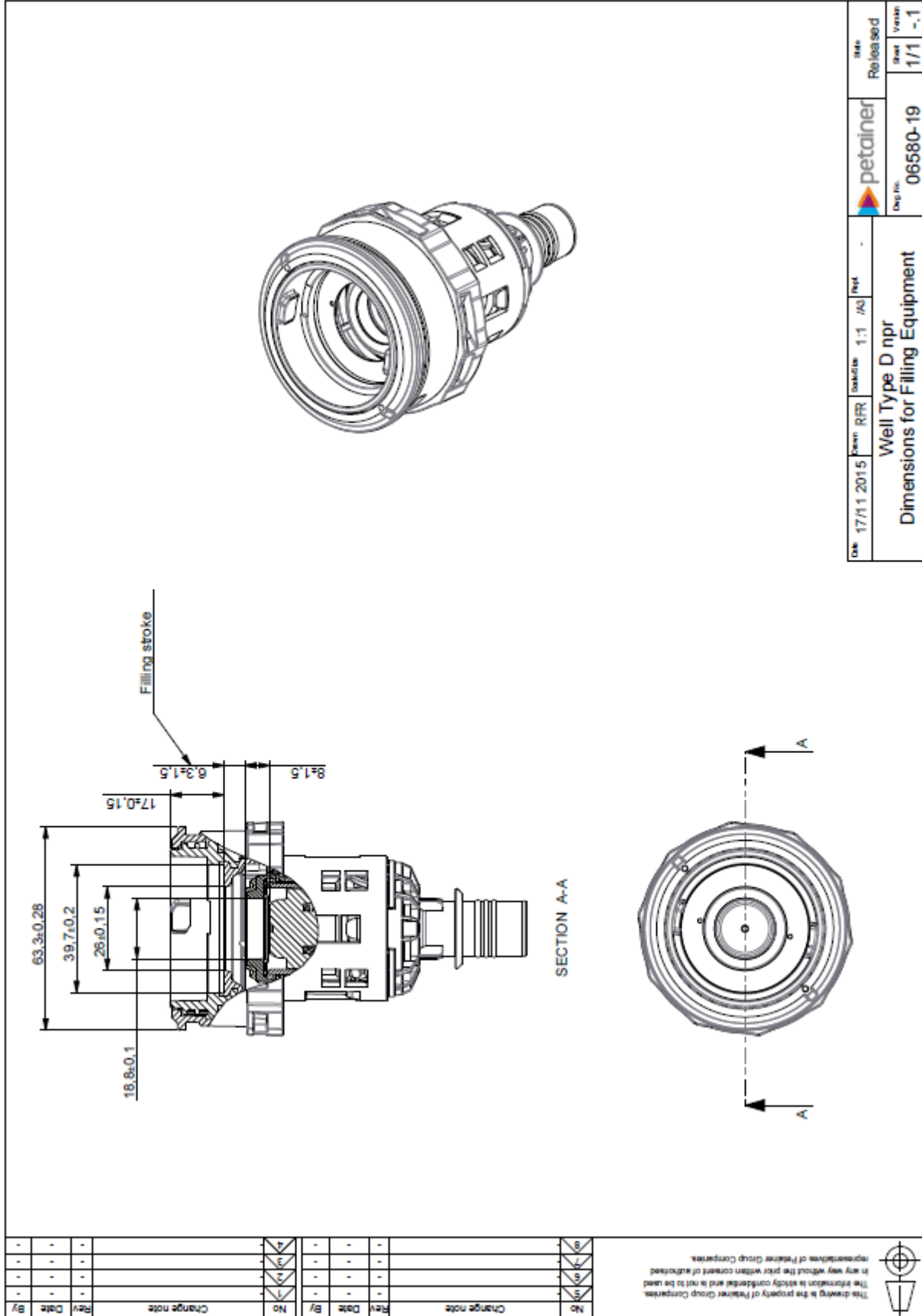
If the racker design allows, it is desirable to flush/disinfect the filling head and each keg valve from outside before and after filling.

1. e.g. with hot water (1 second with 85°C / 185 F).
2. Water pressure before filling maximum 1.0 bar / 14 psi.
3. Water pressure after filling should not exceed the pressure in the Keg.

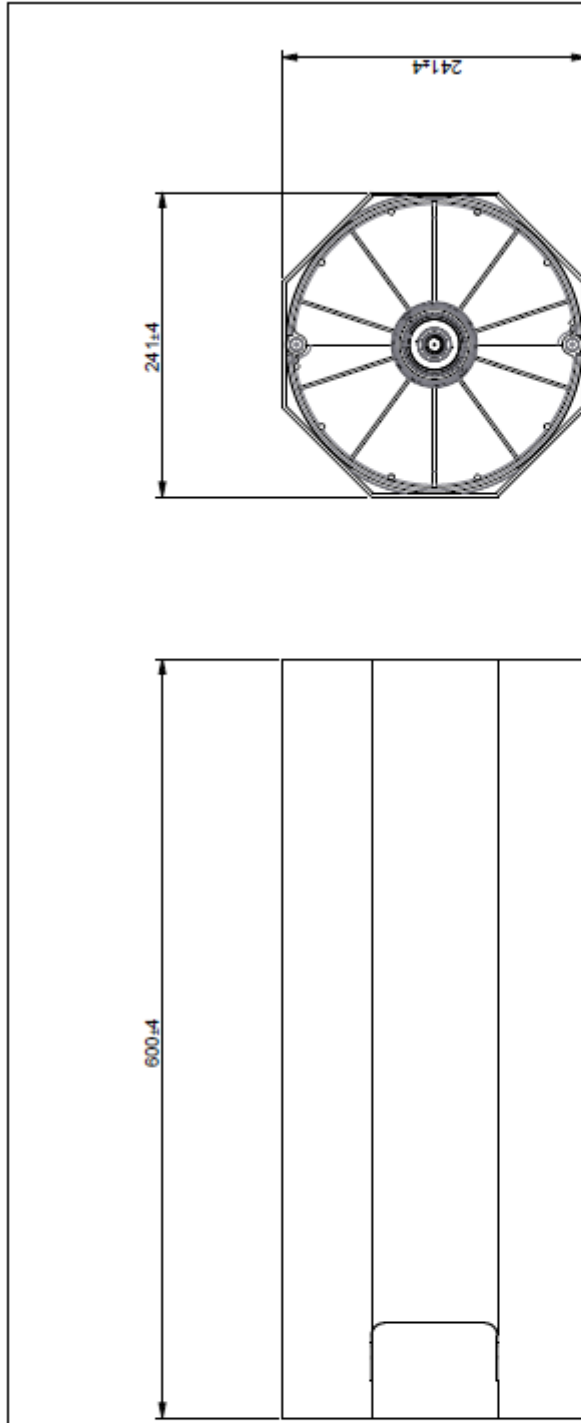
Safety

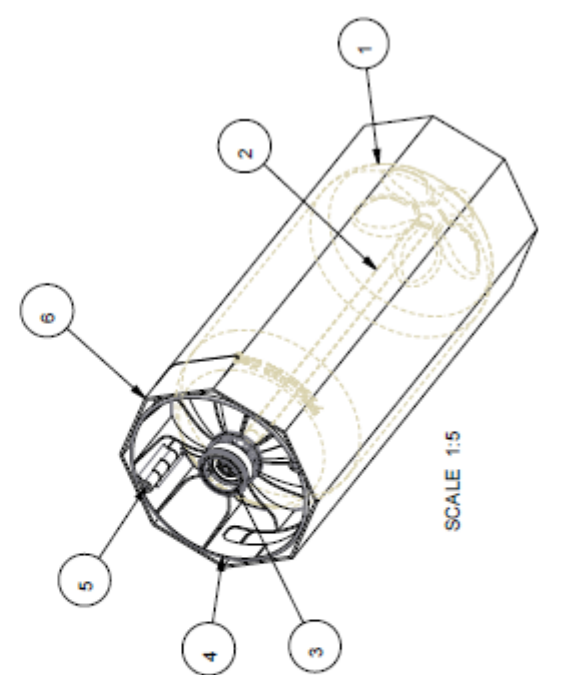
1. All machinery must be guarded in accordance with local regulations.
2. Eye and ear protection, together with work-wear should be used.
3. PET Kegs can burst when damaged by sharp objects.
4. Under filled Kegs or other rejects should be de-pressurised prior to disposal, using the Pressure Release Tool (PRT) supplied.





D npr = D-type without automatic pressure relief function





SCALE 1:5

6	1	20 l USD Octabn	06603-02	PP	353.0
5	2	20 l USD Hinge	06651-03		
4	2	20 l USD Chime Half	06651-02		
3	1	Well Type D npr	06690-17		
2	1	474 mm S.D. Spear	06553-01		
1	1	20 l Classic	06508-03		
Part Qty		Name	Model No.	Material	Weight [g]
Date: 20/11/2015		Rev: RRR	Scale: 3:10 (A3)	Note	


No.	Change note	Rev.	Date	By

No.	Change note	Rev.	Date	By

20 l USD D npr
Assembly Drawing

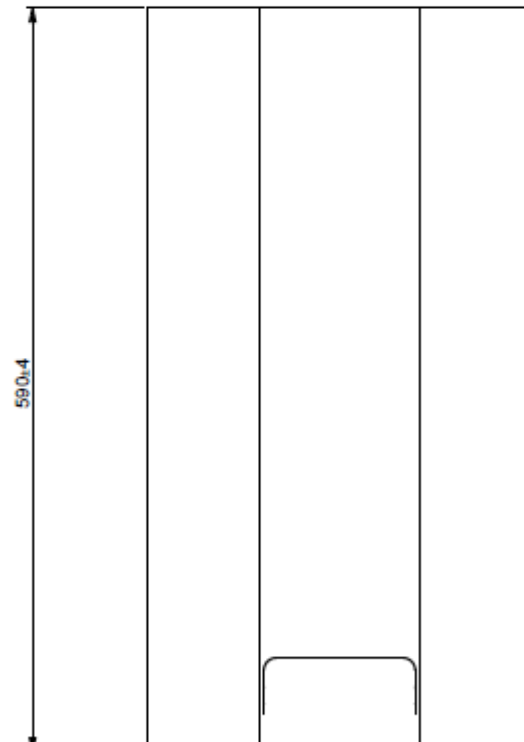
Part No.	06601-30
Material	PP
Weight [g]	353.0

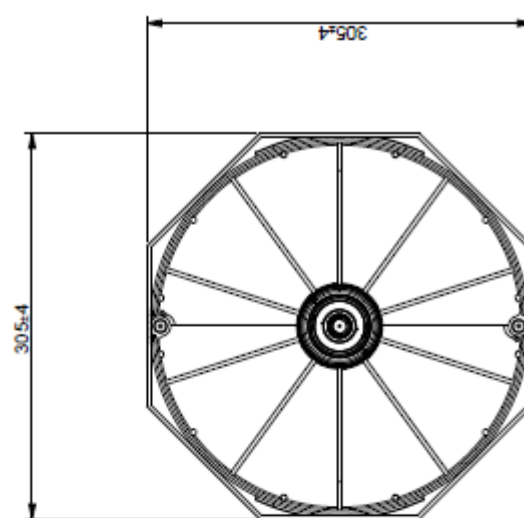
Released	1/1	Version	-1
----------	-----	---------	----

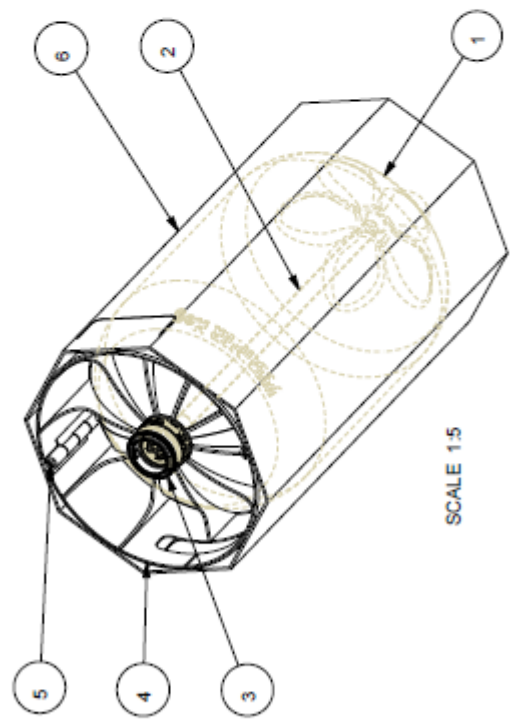


The drawing is the property of Petainer Group Companies. The information is strictly confidential and is not to be used in any way without the prior written consent of authorized representatives of Petainer Group Companies.


D npr = D-type without automatic pressure relief function







SCALE 1:5

6	1	30 l USD Octabrh	06604-03	PP	430.0
5	2	30 l USD Hinge	06652-05		
4	2	30 l USD Chime Half	06652-04		
3	1	Well Type D npr	06690-17		
2	1	462 mm S.D. Spear	06653-02		
1	1	30 l Classic	06690-01		
Pos	Qty	Name	Material	Weight [g]	Note
06	20/11 2015	Rev	3:10 (A)	pet	
30 l USD D npr Assembly Drawing					
					Date Released
			Dep. No. 06602-35		Sheet 1/1
					Version -1

No.	Change note	Rev.	Date	By

No.	Change note	Rev.	Date	By

This drawing is the property of Petainer Group Companies. The information is strictly confidential and is not to be used in any way without the prior written consent of authorized representatives of Petainer Group Companies.

